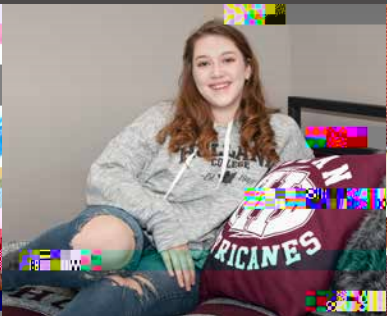


# RESIDENCE H



CHARLOTTETOWN PRINCE EDWARD ISLAND





W c \ H a d C \ d \ d c ,  
277 \ d \ a d a \ a ac  
d \ ca \ a \ d \ a d \ ! H ad  
c \ ab \ a d \ d \ a dab  
a \ .O \ d c \ a a  
a \ a \ a c \ ab a  
b .T \ a \ d c \ a \ b  
T a \ a \ a  
a d \ a \ a  
c c \ .O  
a \ a d \ a ac a c \ b  
c a d \ d c \ !

T \ d c \ c ,  
d \ d c c \ .T  
a a \ a \ ca \ ca  
M \ a \ a a a  
a \ a \ c  
a d \ c

R d c \ ca b \ c \ b \ a ac  
c a \ a \ a d  
T a d b \ a \ a \ d c  
a d \ a \ c \ a

W a d \ d \ c \ d  
a d b \ a \ a a -6.9 ( d ) \ a \ a c W ( ) -15 ( ) -1.7.3 ( ) 13 (c) -8.4 ( c) -7.4 (3) -32.2 ( )

**GLENENNING HALL**

T 186-b d, d c a, 90 d  
a a, . T , a, 62 -b d, a a,  
11 a a, , 17, a a, a d,  
a a, b \ acc, da d ab d .

**The comfortable three- oor building features:**

- \ a  
a \,  
ac \ d c \ \ \ \ \ ac \ \,  
a,  
c \ , a d a d, ac \ ac \ \,  
d \ \ \ \ a d c, ca , a  
d \ \ \ \,  
c, acc a d - a d, ,  
d a d \ da ( c C, a B, a )

**Glendenning Hall apartments contain:**

a b d, -1.91035.3 ( 4)4 T1 ( )-8.4 ( )-3.7 ( )-23 (d)-10 ( )-46 ( )-28.6 ( )-17.5 ( )-3.8 ( )-29.1 ( )-0.7 ( )1.8 ( ) Tc



F, S b, Ma, b d a, a d a  
 a d c c d  
 a T d a c d 24 a d a  
 a d a acc b a d  
 a d c a a d a  
 a d c a a b  
 b d a a A b  
 ca b  
 c d c

## RIGHTS AND RESPONSIBILITIES

Student tenants have the right to:

- Live in a safe and secure home
- Pay a reasonable rent
- Have a home that is fit for human habitation
- Enjoy a quiet enjoyment of their home
- Enjoy a home that is free from damp, mould and vermin
- Enjoy a home that is free from gas and electrical safety issues
- Enjoy a home that is free from health and safety issues
- Enjoy a home that is free from anti-social behaviour
- Enjoy a home that is free from harassment and violence
- Enjoy a home that is free from discrimination
- Enjoy a home that is free from illegal eviction
- Enjoy a home that is free from illegal subletting
- Enjoy a home that is free from illegal use



## COOPERATION WITH STAFF

I, ac, c, a, c, da  
 a, a, a, c, a, H, a, C, a,  
 acc, da, a, a, a, c, d  
 b, c, D, c, b, a, c  
 a, a, a, a, b, c, a,  
 a, a, ca  
 c, a, b, d.

T, a, a, a, c, d, c,  
 a, b, I, d,  
 ba, ca, ab, c, d, a, a, a,  
 b, b, b, c, d, c, a, ac,  
 c, c, d, c, d, c, d, c.

## PERSONAL INFORMATION

I, c, c, a, d, a  
 a, a, d  
 b, ( c, c, ca ). I  
 b, b  
 b, a, a, S76-11 ( )-30.4 ( a)-14 25.2 ( -14 25.2









## POSSESSION OF WEAPONS

---

(A) (1) A person who is a member of a criminal street gang, as defined in section 1.1, and who is in possession of a handgun, a dangerous weapon, or a controlled substance, shall be fined not more than \$10,000 or imprisoned not more than 10 years, or both, and shall be disqualified from holding public office for a term of 10 years.

(B) (1) A person who is a member of a criminal street gang, as defined in section 1.1, and who is in possession of a handgun, a dangerous weapon, or a controlled substance, shall be fined not more than \$10,000 or imprisoned not more than 10 years, or both, and shall be disqualified from holding public office for a term of 10 years.

(C) (1) A person who is a member of a criminal street gang, as defined in section 1.1, and who is in possession of a handgun, a dangerous weapon, or a controlled substance, shall be fined not more than \$10,000 or imprisoned not more than 10 years, or both, and shall be disqualified from holding public office for a term of 10 years.

(D) (1) A person who is a member of a criminal street gang, as defined in section 1.1, and who is in possession of a handgun, a dangerous weapon, or a controlled substance, shall be fined not more than \$10,000 or imprisoned not more than 10 years, or both, and shall be disqualified from holding public office for a term of 10 years.

(E) (1) A person who is a member of a criminal street gang, as defined in section 1.1, and who is in possession of a handgun, a dangerous weapon, or a controlled substance, shall be fined not more than \$10,000 or imprisoned not more than 10 years, or both, and shall be disqualified from holding public office for a term of 10 years.

F. (1) A person who is a member of a criminal street gang, as defined in section 1.1, and who is in possession of a handgun, a dangerous weapon, or a controlled substance, shall be fined not more than \$10,000 or imprisoned not more than 10 years, or both, and shall be disqualified from holding public office for a term of 10 years.

## HORSEPLAY

---

## ROOM ENTRY POLICY

A a, a a c, a a  
acc, a a a a a a a a  
a a a a a a a a a a  
c, c a c :  
W a a a b C a C  
P c C a F, D a  
I a a a a a a a  
a a b b a a a a a  
a a /  
T c a a a a c  
T c a a a a a a c  
T a c, a a a b a c c a  
c a / a a b a c a c c a  
T c a c c a a a  
a a c  
T c c a a c a c a  
a a a c  
T a a c c a / a a  
a a a a a a a  
a b a a a a T c a b  
a c a a a a  
W a a b a a c a b  
c a c  
W a c a a a a a a a  
c ( a a a a a a a )  
I a c a a a  
a c c a a a b

## DISCIPLINE CODE

A H a C (c)-25.2 ( ) AW a ( 66 T a ) a)-16.6 ( ) 9.70.069 Tc -21 ( ) 11.3 69 Tc -1 ( A ) 82 0 T a -0087 a c

## MISCONDUCT

B a a c d c c  
 d c a, ac .T a b a  
 a a d b, ad :  
 N - ac a d, a, a a, c  
 V a /c a c  
 M c /d b a  
 V a a c c  
 Pa a a a  
 V a c  
 V a c  
 V a a c a d a d  
 B a c a a b,  
 c c ca  
 O ab a a a d/, a  
 a c c  
 T a d/, d  
 V a b d  
 U a a d a c  
 b d, ac d  
 Fa c d, c ac  
 c a ac ca  
 V a a Ca a d a a  
 U a d a a a a  
 c d c  
 S c a ca a c, ca  
 D b, a a a ac a b,

## DISCIPLINARY SANCTIONS

T acc da a a, a, d c a  
 b, a  
 a c c d c d c :  
 a. a, ba, a d, c  
 c d, b d,  
 ca a d c ;  
 b. a a d (d c d a QF012);  
 c. a d a a a  
 \$50, a b a da a  
 c d c a da, d D c a,  
 P, ba (d c d a QF012);  
 d. a c c (d c d a QF012),  
 a a \$50 a d, a cab, a b  
 a da a c d c ;

a c c a da, c da  
 d a c (d c d  
 a QF012), a a \$50 a d,  
 a cab, a b a da a  
 c d c .

## HANDLING INCIDENTS OF MISCONDUCT

W c d c cc, , c d b  
 acc da a a, a d, d c  
 c, d a, b :  
 1. O a a d c  
 a d a a d d c  
 .T a d c c c, /  
 c a d a, c c a  
 d d, a d, a d a  
 b a c, c d. A d d a  
 d c acc da a a,  
 a d a a a c a, d  
 b d, da a, ba a a  
 a d a da d, b a  
 acc, d O d c  
 a a, a c, c d  
 b a b c a a,  
 b, a .S a a a d  
 d c c d a d,  
 acc da a a a a  
 T a a a c d c

**If a student is issued three verbal warnings, an automatic written warning will be issued, regardless if the verbal warnings were issued for different rule/policy infractions. Students are expected to read and understand the rules and policies while living in residence.**

2. O c d, d d  
 a M c d c N c (QF012). T c a  
 b da a, a a  
 a c - c a b  
 d a a c d c b a,  
 c .T a d ca  
 c c, / c a d a  
 a d. T c d b d  
 a d d c a b, c  
 c .Ac, ac d a

3.

c \ ac \ acc \ a \ a a \ ,  
 a a \ a c a \ c . I  
 d \ a \ ab \ b \ ac \ d \ ab \ ,  
 \ d \ a \ C a \ ,  
 C \ P \ c \ b ca \ d .  
 17. T \ acc \ a \ a a \ , \ d \ c



A a a d a c a b  
 a a d c b d . I a a  
 c a c a b a d  
 a d d c d  
 d c a d

S c ca a a c b d  
 24 a da . I c a  
 c a  
 c c b d d . T c d  
 (b d ):

a c ca a a  
 ac a  
 c a c ca a ac a b c  
 a c ca a c b d  
 ca a d a  
 d a c ca  
 c a a a a

a d a , b , c , 9.5 ( ) 6.9 ( ) -15.9 (b) 2.1 ( ) 5.2.3 ( ) 10 ( ) -78 0 T 0 15220.1 (Y) 75 c02 . .7 ( ( ) - ( ) ) 6 ( ) 18.9 -16.7 -11.1



## HOW TO INITIATE A LOCK-DOWN

- I \ \ \ \ \ \ \ \ \ \ b a \ \ \ \ \ a a \ \ \ \ \ a ca  
/ \ \ \ \ \ \ \ \ \ \ c a \ \ \ \ \ a a a \ \ \ \ \ a b  
c \ ca \ \ \ \ \ a a \ \ \ \ \ :
1. R a ca a d \ \ \ \ \ b , \ \ \ \ \ a a a a
  - 2.

**At the sound of the alarm:**

R a ca

C d

P a a c

L a

F a c d

L a c b c d

Wa a a c

E ac a b d bac



## THINGS TO BRING

---

Y... d c ... d a d b T



## LAUNDRY FACILITIES

---

T a c a a d a d ac ca d  
c . T c b  
a a a . T

L a c a c  
 T a a ad  
 a a a ad a a a a  
 a a b

R a a a a ad  
 a a Ea  
 c a a ca  
 a a a c  
 b a a a a  
 ca a a b  
 c a a ad  
 a d d W c d  
 b c c a  
 a a a a a a  
 a a a c  
 a

R c a ca a a a  
 ab a a

ROOMMATE STARTER KIT





1. **Save Water** - Take shorter showers, turn off the tap when brushing your teeth, and fix leaks. Use water-saving devices like low-flow showerheads and faucet aerators. Don't let the toilet run.

2. **Save Energy** - Turn off lights and electronics when not in use. Use energy-efficient light bulbs (LED or CFL). Seal air leaks around windows and doors. Use a programmable thermostat to save energy on heating and cooling.

3. **Buy Less Stuff** - Buy only what you need. Choose quality over quantity. Buy second-hand or recycled products. Avoid fast fashion and disposable goods.

4. **Cut Down on Food Waste and Avoid Disposables** - Plan meals to avoid food waste. Compost food scraps. Use reusable containers and dishes instead of disposables. Recycle properly.

5. **Bring Your Own Bag** - Use reusable shopping bags instead of plastic. Bring reusable water bottles and coffee cups.

6. **Buy Recycled Products** - Look for products made from recycled materials. Recycle your own waste.

7. **Avoid Using Hazardous or Toxic Substances** - Choose natural cleaning products. Avoid pesticides and herbicides. Use eco-friendly paints and stains.

8. **Stop Junk Mail** - Request to be removed from mailing lists. Recycle junk mail.

9. **Reduce, Reuse, Recycle**  
**Reduce:** Use less, buy less, waste less.  
**Reuse:** Fix, repair, reuse, donate, sell, or recycle.  
**Recycle:** Recycle paper, plastic, glass, and metal.

10. **Get Eco-Active** - Support eco-friendly businesses. Advocate for environmental policies. Join local sustainability groups.



